

BETTENDORF FOOD PANTRY



AERIAL VIEW



VIEW FROM SOUTHEAST

Downing Architects

A Division of Bruner, Cooper and Zuck, Inc.



2415 Eighteenth Street
Bettendorf, IA 52722
p 563 . 355 . 1856
f 563 . 355 . 1857
www.downingarch.com

BETTENDORF PARK BOARD

SITE DEVELOPMENT

PARKING FOR 15 - 20 VEHICLES
ADA ACCESSIBLE ENTRANCE
OVERHEAD DOOR FOR DONATIONS
OVERHEAD DOCK DOOR FOR DELIVERIES
DUMPSTER ENCLOSURE
SITE DEVELOPMENT / UTILITIES
LANDSCAPING

OFFICE AREA

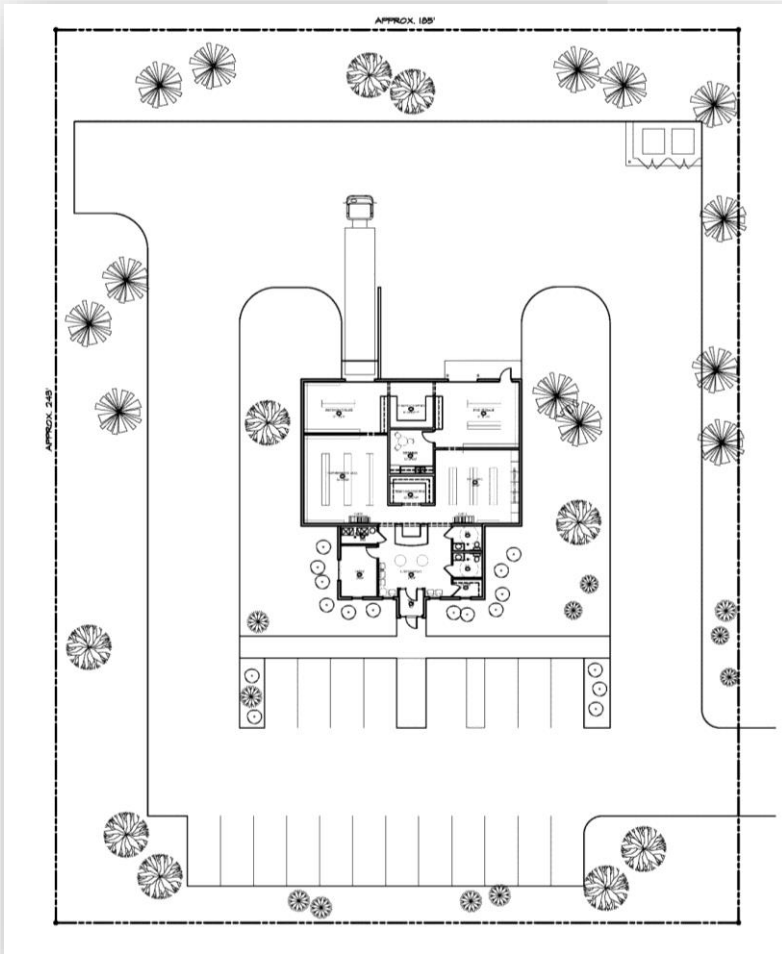
ENTRY VESTIBULE
SEATING FOR 10 TO 12
DONATION COUNTER / GREETER
ADA ACCESSIBLE RESTROOMS – EACH SEX
OFFICE – APPROX. 10'x14'
MECHANICAL ROOM / JANITOR

PROGRAMMING OF SPACES

WAREHOUSE AREA

NON-FOOD “RETAIL” AREA
“RETAIL” FOOD AREA
DONATION STORAGE
KITCHEN / BREAK ROOM
CART STORAGE
SHIPPING / RECEIVING
DONATION STORAGE

BETTENDORF FOOD PANTRY



PRELIMINARY SITE PLAN LAYOUT



FOOD PANTRY - ENTRY



SHIPPING / RECEIVING

Downing Architects

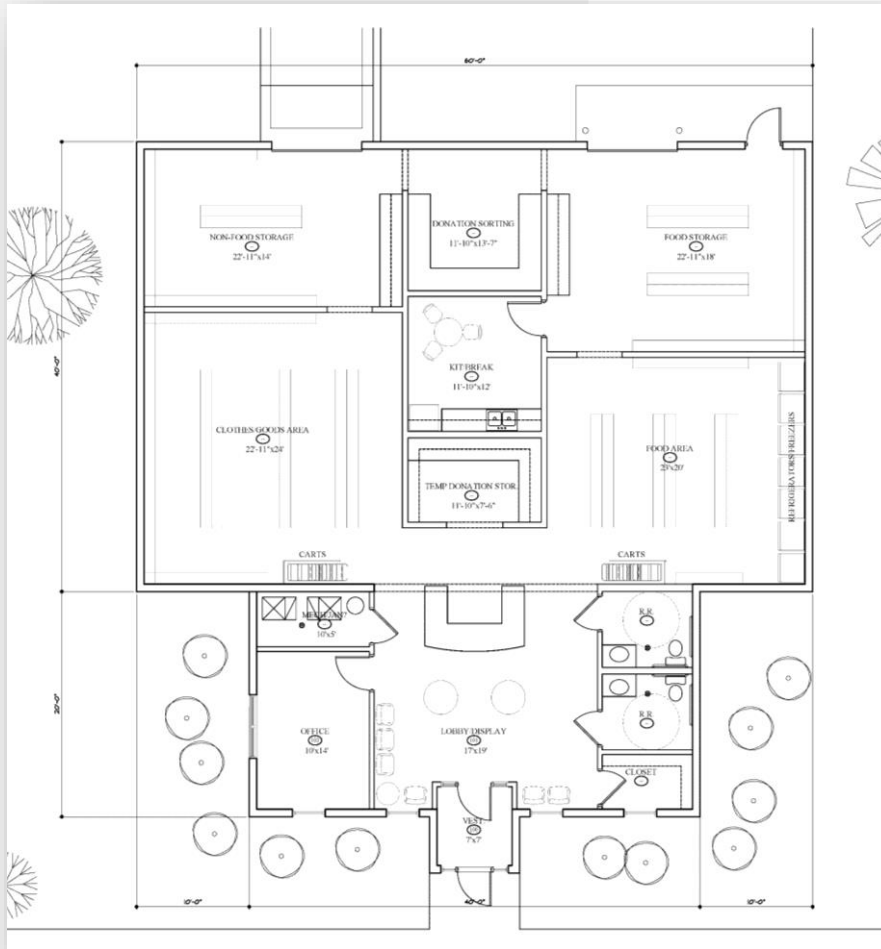
A Division of Bruner, Cooper and Zuck, Inc.



2415 Eighteenth Street
Bettendorf, IA 52722
p 563 . 355 . 1856
f 563 . 355 . 1857
www.downingarch.com

BETTENDORF PARK BOARD

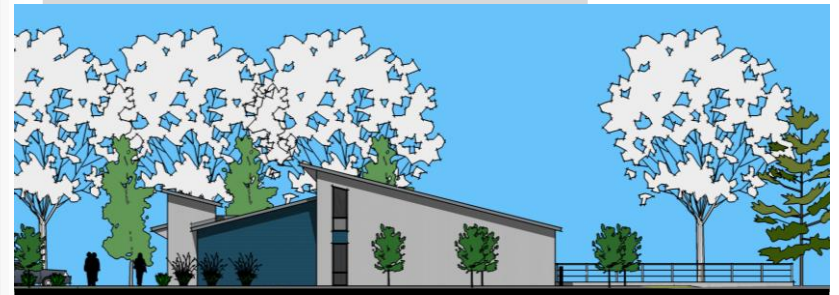
BETTENDORF FOOD PANTRY



PRELIMINARY FLOOR PLAN



FRONT ELEVATION



SIDE ELEVATION

Downing Architects

A Division of Bruner, Cooper and Zuck, Inc.



2415 Eighteenth Street
Bettendorf, IA 52722
p 563 . 355 . 1856
f 563 . 355 . 1857
www.downingarch.com

BETTENDORF PARK BOARD

BETTENDORF FOOD PANTRY

NEW FOOD PANTRY

BUILDING:

NEW BUILDING AREA: 3,240 SF @ \$ 115/SF \$ 372,600

SITework:

SITE UTILITIES: ALLOWANCE \$ 25,000

SITE DEVELOPMENT ALLOWANCE \$ 100,000

CONSTRUCTION COST SUBTOTAL: \$ 497,600

CONTINGENCY: (Approx. 7.5%): \$ 37,320

ANTICIPATED COST OF CONSTRUCTION: APPROXIMATELY \$ 535,000

DESIGN COSTS: (Approx. 7.5%) ALLOWANCE \$ 40,000

FURNITURE / FIXTURES & EQUIPMENT ALLOWANCE \$ 25,000

“SOFT COSTS” ALLOWANCE \$ 16,000

CONTINGENCY: (Approx. 10%) ALLOWANCE \$ 4,000

OTHER COSTS: \$ 45,000

TOTAL PROJECT COSTS: RANGE: \$ 575,000 TO \$625,000

APPROXIMATE SITE AREA REQUIRED 45,200 SF (1.04 AC M.O.L.)

PROJECT COST OPINION

Downing Architects

A Division of Bruner, Cooper and Zuck, Inc.



2415 Eighteenth Street
Bettendorf, IA 52722
p 563 . 355 . 1856
f 563 . 355 . 1857
www.downingarch.com

BETTENDORF PARK BOARD

BETTENDORF FOOD PANTRY



AERIAL VIEW



Downing Architects

A Division of Bruner, Cooper and Zuck, Inc.



2415 Eighteenth Street
Bettendorf, IA 52722
p 563 . 355 . 1856
f 563 . 355 . 1857
www.downingarch.com

BETTENDORF PARK BOARD